

Caimi
BREVETTI



MONNALISA

MONNALISA

The Caimi Brevetti library system: MONNALISA

MONNALISA is a line designed by Caimi Brevetti specifically for the library furnishing sector. It all began with in-depth research and study in this sector with the objective of providing designers and sector operators with a viable alternative to existing furniture systems. It has a highly distinctive image that characterises the pre-existing architectural elements.

It is a modular, flexible, versatile and visually lightweight product, easily adaptable to suit a wide variety of situations and needs. MONNALISA is a complete furniture system consisting of triple steel rod uprights fitted with adjustable feet and shelves in micro-perforated or full steel sheet, with a "double thickness" bracing rounded front edge and a raised rear edge, folded at the bottom to form the slide tracks for the bookends.

The shelf is hooked directly onto the uprights and can be positioned either horizontally or inclined. The structure is stabilised by support elements such as bracing crosses and back panels in steel bars or back panels in micro-perforated sheet metal. The system also has a wide range of accessories.

Aesthetic values of MONNALISA system

MONNALISA is a product with an accurate, neat, and stylish design making it the ideal solution for all kinds of environments - historical or new buildings.

The upright is made of steel tubulars and has an extremely lightweight, simple and elegant look. An example of perfect integration between shape and functionality, it is represented by the design of the inclined and horizontal tubulars which, in addition to creating the characteristic style of the product, is also used to couple the shelves, without the need for additional fittings. The exceptionally sturdy and visually lightweight metal shelves also enhance the design of this product. The numerous references related to installations in a variety of historical and / or modern environments, testify the aesthetic versatility of the product and the results achieved over the years, especially for furnishings and installations of high architectural value. MONNALISA is the star choice especially by professionals, designers and architects who want to differentiate their offer.



Biblioteca Comunale Ariostea,
Ferrara (Italy)



Biblioteca Comunale di Collecchio,
Villa Soragna, Parma (Italy)



Lycée Français Stendhal, Milano
(Italy)

Technical and functional features

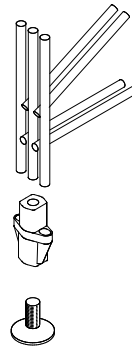
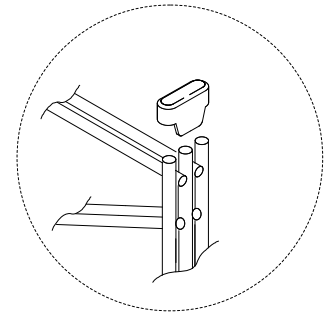
Uprights:

Composed of three Ø 7 mm vertical steel rods aligned at the front and three with the same characteristics at the back, joined together by a double row of Ø 6 mm electrowelded horizontal rods; the shelves can be coupled every 110 mm.

The space between the vertical rods measured at the front is 5 mm, a distance that allows the passage of M4 screws used to fasten accessories and sign bands in place, and bracing crosses or other structure support elements at the back.

The uprights are also equipped with a double row of Ø 6 mm inclined rods, that brace the structure and permit the assembly of the inclined shelves every 220 mm. They are painted with a metal grey or textured black thermohardening epoxy-powder coating. The adjustable feet (max adjust. 15 mm) are composed of a high-tech polymer leveller tip with a zinc-plated threaded insert moulded into the cast and a zinc-plated steel screw whose end is embedded in a high-tech polymer support foot.

The uprights also come with protection high-tech polymer "caps" at the top. The single-faced uprights can be transformed into two-sided uprights using special hardware described in the " TWO-SIDED COUPLING" section.



Narrow black feet (standard)

Feet (code 4986/2):

Set of 2 narrow grey feet, 2 wide grey feet and 2 grey protection high-tech polymer "caps" for the uprights. The adjustable feet (max adjust. 15 mm) are composed of a high-tech polymer leveller tip with a zinc-plated threaded insert moulded into the cast and a zinc-plated steel screw whose end is embedded in a high-tech polymer support foot.



Narrow and wide grey feet (optional)

Bracing crosses (codes 2910-GM / 2960-GM):

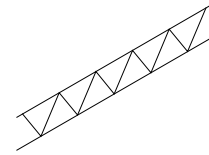
Composed of two steel Ø 8 mm rods, flattened and perforated in the centre and at the ends, coupled centrally with M4 screws; they are fastened to the frame by means of M4 screws passing through the vertical upright bars and wing nuts with washers. They are painted with a metal grey thermohardening epoxy-powder coating.



MONNALISA

Back panels (codes 2722-GM / 2725-GM):

Made with \varnothing 8 mm horizontal steel rods, flat and perforated at the ends to couple them to the uprights with 4 x M4 screws with washers and wing nuts. The \varnothing 6 mm rod is welded in the centre between the two \varnothing 8 mm horizontal rods. They are painted with a metal grey thermohardening epoxy-powder coating.



Microrperforated back panels (code 6A2230):

Made of 1 mm thick micro-perforated steel sheet with accident-proof folded edges.

The ends are perforated to couple them to the uprights with 4 x M4 screws with washers and wing nuts.

They are painted with a metal grey thermohardening epoxy-powder coating.

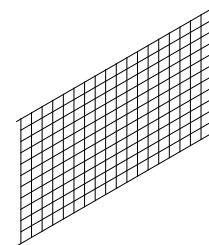


Detail of microperforated panel

Grids (code 2716-GM):

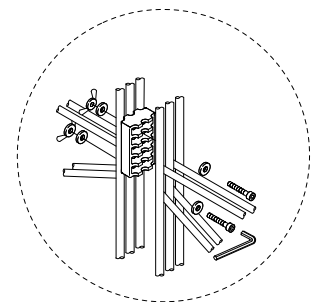
Made with two \varnothing 8 mm horizontal electrowelded steel rods, flat and perforated at the ends to couple them to the uprights with 4 x M4 screws with washers and wing nuts.

The series of vertical and horizontal rods that form the "grid" is made in \varnothing 4 mm, 46 mm pitch electrowelded steel. They are painted with a metal grey thermohardening epoxy-powder coating.



Two-faced connection (code 2995):

Achieved by joining the two single-sided uprights with screws and special spacers in translucent high-tech polymer, suitably shaped to fit the section of the uprights.



MONNALISA

Microperforated steel shelves (codes 63R100 - 63R600 - 64R100 - 64R600):

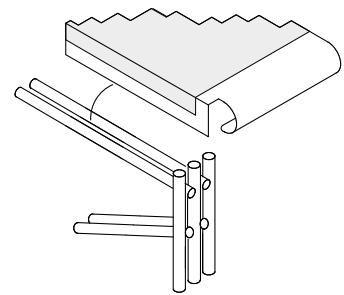
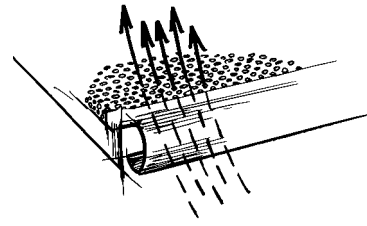
They are made in micro-perforated steel sheet, with a bracing "double thickness" folded and suitably rounded (accident-proof) front edge.

The back edge is raised to hold the books and has a bottom rail to accommodate the sliding bookends.

The side edges of the metal shelves are folded so they can be hooked directly on the horizontal rods of the uprights, without need for additional support systems.

The micro-perforation improves air circulation which improves air flow around the books, which prevents them from getting damp.

They are painted with a metal grey thermohardening epoxy-powder coating.



Steel shelves (codes 63R102 - 63R602 - 64R102 - 64R602):

They are made in full steel sheet, with a bracing "double thickness" folded and suitably rounded (accident-proof) front edge.

The back edge is raised to hold the books and has a bottom rail to accommodate the sliding bookends. The side edges of the metal shelves are folded so they can be hooked directly on the horizontal rods of the uprights, without need for additional support systems.

They are painted with a metal grey thermohardening epoxy-powder coating.

Bookeng (code 6A2780):

Made of suitably folded chrome-plated steel rods, with a high-tech polymer element to allow them to slide along the track inserted below the metal shelves. It is designed so that it only moves when pushed manually, and then stop due to the gravity effect when released.



Detail of book-holder

Bookend rod (code 2747-GM):

Made from Ø 8 mm steel sheet, flattened and perforated at the ends to couple them to the vertical upright rods using M4 screws with washers and wing nuts.

They are painted with a metal grey thermohardening epoxy-powder coating.

Dimension: L 960 mm.



Bookend rod

MONNALISA

Sign band for uprights (code 6A50):

Sign band made from transparent methacrylate, folded to form a slot-in pocket, with two holes to screw it to the front of the steel rod upright.

Dimension: L 150 mm - H 32 mm



Detail of sign band for uprights

Sign band for shelves (code 6A52):

Shelf sign band made in transparent high-tech polymer, folded to form a slot-in pocket for the signs.

The sign band is rounded to the same radius as the front edge of the shelf and is fixed directly to the same by means of double-sided adhesive.

Dimension: L 120 mm - H 22 mm



Detail of sign band for shelves

Sign bands (codes 6A2272 - 6A2274 - 6A2278):

Made from suitable folded steel sheet and hooked onto special steel supports (code 6A2278) fastened to the uprights with M4 screws with washers and wing nuts.

They are painted with a metal grey thermohardening epoxy-powder coating.

Dimension: L 960 mm - H 100 mm or L 560 mm - H 100 mm



Detail of sign bands

Sign bands (codes 2740-GM / 2743-GM):

Made from 1 mm steel sheet with holes at the sides to couple them to the upper horizontal upright rods using 4 x M4 screws with washers and wing nuts.

They are painted with a metal grey thermohardening epoxy-powder coating.

Dimension: L 960 mm - H 120 mm or L 560 mm - H 120 mm



Detail of sign bands

Sign banner (code 2746):

Made from 1 mm steel sheet with 2 holes to couple them to the vertical upright rods using 2 x M4 screws with washers and wing nuts.

They are painted with a metal grey thermohardening epoxy-powder coating.

Dimension: 120 mm x 120 mm



Detail of sign banner

MONNALISA

Drawing-holder (cod. 2895-GM):

It consists of a 3 mm thick steel sheet bar, perforated at the side to accommodate the 4 x M4 screws with washers and wing nuts, to fasten the bar to the steel tube uprights.

The bar has a 20x9 mm slot to connect the 3 chrome-plated steel tube supports. The bar is painted with a metal grey thermohardening epoxy-powder coating.



Detail of drawing-holder

Microperforated steel external closings

(codes 6A2250 - 6A2256):

They are made from 1 mm thick micro-perforated steel sheet, specifically folded so they can be coupled directly to the upright horizontal rods, with metal grey thermohardening epoxy-powder coating.

Available for widths of 300 mm and 450 mm and heights of 330 mm.

They can not be used on intermediate uprights as internal closing panels.



Detail of microperforated steel external closing

Melaminic beech-wood finish side panels (cod. 63ML75 - 63ML108 - 63ML174 - 63ML207):

Side panels made from 16 mm thick melamine with beech-wood finish, ribbed translucent methacrylate, they fasten directly to the upright horizontal rods using shaped, folded metal-grey epoxy-powder coated steel sheet metal. The hooks are screwed onto the panels by M4 zinc-plated screws. Available for widths of 300 mm and for uprights with heights of 750 mm, 1080 mm, 1740 mm and 2070 mm. They can not be used on intermediate uprights as internal closing panels.

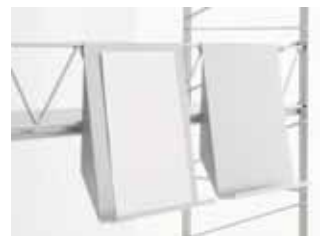


Detail of melaminic beech-wood finish side panel

Magazine display rack (code 2892-GM):

They are made from 1 mm thick steel sheet, specifically folded so they can be coupled directly to the upright horizontal rods with a magazine support at the front. They are painted with a metal grey thermohardening epoxy-powder coating.

Dimension: L 280 mm - H 320 mm



Detail of magazine display rack

MONNALISA

Methacrylate magazine display rack (code 6A2279):

Three panel display unit consisting of three magazine/brochure racks made in curved satin finish methacrylate; a \varnothing 20 mm chrome-plated steel tube and two epoxy-powder coated steel plates, each with two screws to fasten the display to the bookcase uprights.

The panels, inserted in the chrome-plated tubular steel, open independently of each other, with a tip-up opening mechanism to access the storage space inside.

Dimension: L 960 mm x H 440 mm



Detail of methacrylate magazine display rack

Multipurpose case (codes 6A60 - 6A65):

They are made in of 1 mm steel sheet, with bracing double-thickness folded and suitably rounded (accident-proof) front and rear edges. The side edges are folded so they can be hooked slot directly into the horizontal rods of the uprights, without need for additional support systems. The container can be fitted with non-slip adhesive (code 6A63) and data strips (code 6A52). They are painted with a metal grey thermohardening epoxy-powder coating.

Inner dimension:

L 947 mm P 434 mm H 210 mm. (cod. 6A60)

L 947 mm P 284 mm H 210 mm. (cod. 6A65)



Multipurpose case

CD / VHS case (code 6A70):

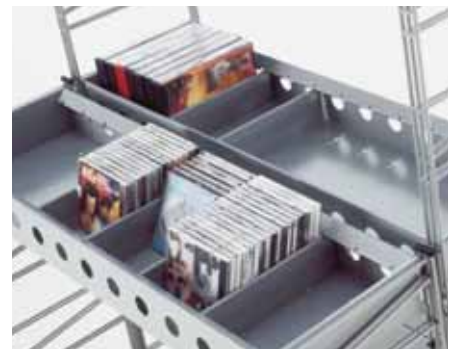
They are made in 1 mm steel sheet, with front and rear edges folded inwards. The side edges are folded so they can slot directly into the horizontal rods of the uprights, without need for additional support systems. The front and rear panels are perforated to give the product a lightweight look.

The container can be partitioned using steel sheet dividers (code 6A73) that slide directly into the slots on the bottom of the container.

They are painted with a metal grey or semi-matt black thermohardening epoxy-powder coating. The container can be fitted with non-slip adhesive strips (code 6A63).

For 300 mm depth uprights only.

Inner dimension: L 947 mm P 280 mm H 95 mm.



Cd / VHS case

MONNALISA

Book holder (cod. 2767-GM):

Made in of shaped steel sheet to adapt to the shape of the metal shelf they adhere to and run along.

They are painted with a metal grey thermohardening epoxy-powder coating.

Solo per profondità 450 mm.



Particolare reggilibri

Book holder (code 6A2782):

Made in of shaped steel sheet to adapt to the shape of the metal shelf they adhere to and run along.

They are painted with a metal grey thermohardening epoxy-powder coating.

Only for depth 300 mm.



Detail of book holder

Foot-rest (codes 2862-GM / 2865-GM) :

Chrome-plated Ø 20 mm steel bars fixed to the folded steel sheet supports by M8 screws to for direct assembly on the upright horizontal rod. The supports are painted with a metal grey thermohardening epoxy-powder coating.

Dimension: L 960 mm - D 435 mm or L. 560 mm - D 435 mm.

Only for depth 450 mm.



Detail of foot-rest

Side joints for Koala displays (cod. 6A2310):

It is made of in folded steel sheet with slots to assemble the KOALA display units – size A5O / A5V / A4O / A4V. The coupling fixture is fastened directly onto the upright horizontal bars. It is painted with a silver-grey thermohardening epoxy-powder coating.

Dimension: L 180 mm - H 160 mm



Side joint for Koala displays

Wall fixing (code 4994-GM):

Wall-mounting bracket made from 3 mm thick shaped steel to secure the steel rod upright to the wall. The bracket has two pre-drilled side holes.

They are painted with a metal grey thermohardening epoxy-powder coating.



Wall fixing

Pair of joints 90° connection (codes 2996-GM):

They are used to join the uprights at a fixed 90° angle; ideal for creating four upright (totem type) display units. Made from 2 mm thick steel sheet, folded to an angle of 90°, supplied with M4 screws with washers and wing nuts to fasten them to the uprights. They are painted with a metal grey thermohardening epoxy-powder coating.



Detail of joint

Pair of joints 90° connection (codes 2994-GM):

They are used to join the uprights at a fixed 120° angle; ideal for creating four upright (totem type) display units. Made from 2 mm thick steel sheet, folded to an angle of 120°, supplied with M4 screws with washers and wing nuts to fasten them to the uprights. They are painted with a metal grey black thermohardening epoxy-powder coating.

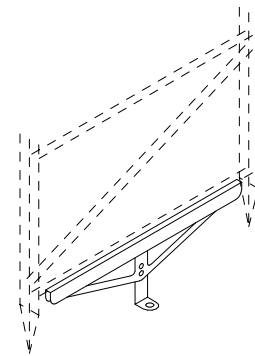


Detail of joint

Floor fixing (code 6A55):

Upright floor-anchoring bracket composed of a steel sheet element that hooks onto the bottom horizontal bar on the upright; it has two central holes for the screws and wing nuts used to fix another L-shaped steel sheet element with an adjuster slot and pre-drilled hole to screw it to the floor.

They are painted with a metal grey thermohardening epoxy-powder coating.



MONNALISA

Double-sided shelving/display unit on castors (codes 6A2100 - 6A2102):

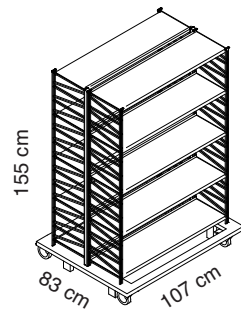
Two-faced bookcase on castors, composed of: two side panels, each comprising two steel rod uprights (each made of three \varnothing 7 mm vertical steel rods aligned at the front and three with the same characteristics at the back, joined together by a double row of \varnothing 6 mm electrowelded horizontal rods allowing the coupling of the shelves every 110 mm) joined by welding to a square 30x30mm steel vertical tube, with pre-drilled holes to fasten it to the central connection crossbar; two rectangular 100x30 mm tubular steel base, welded to the side panels, with couplings for the connection crossbars, fittings for the castors and safety support feet near the castors; four swivel ultra-sturdy rubber castors with brakes; two bottom rectangular 60x30 mm steel tube crossbars and a central rectangular 100x30 mm steel tube crossbar.

The structure elements are all assembled using zinc-plated steel screws.

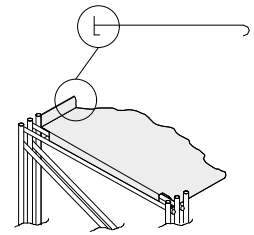
The shelves are made from micro-perforated or full steel sheet and hook directly onto the assembled structure without the need for any screws (see technical data for MONNALISA shelves code 63R100, 63R102).

The shelves can be fitted either in a straight position, with the raised containment edge at the back (direct coupling to the horizontal rods) or inclined with the raised containment element edge at the front (direct coupling to the slanted rods). All the elements are painted with a metal grey epoxy-powder coating.

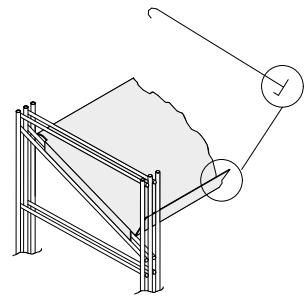
Dimension: length 107 cm - depth 83 cm - height 155 cm.



6A2100 / 6A2102



Assembling scheme for straight shelf



Assembling scheme for inclined shelf



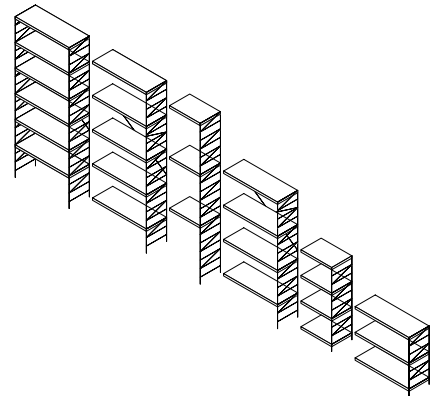
MONNALISA

Dimensional features

- Depth: Available in two sizes, 300 and 450 mm
- Height: Uprights available in height: 2070 - 1740 - 1080 - 750 mm
- Length: First unit L=1000 or 600 mm
Add-on units L=965 or 565 mm

Uprights colour: metal grey

Shelves colour: metal grey



Basic information on how to develop a Library project

There are two different procedures:

- Starting from a specific tender which includes all the details on the type of furniture, materials, quantities and use of space.
- Starting from partial or no specifications at all, in which case it is necessary to collect the following information:
 - volumes to be archived
 - number of users to be accommodated, i.e. seating places
 - different use of spaces, i.e. if restricted areas are required or if the areas must be divided according to specific theme concepts etc.
- The MONNALISA library solution is not suitable for use by children

Average reference data for the Monnalisa system

BOOKSHELF:

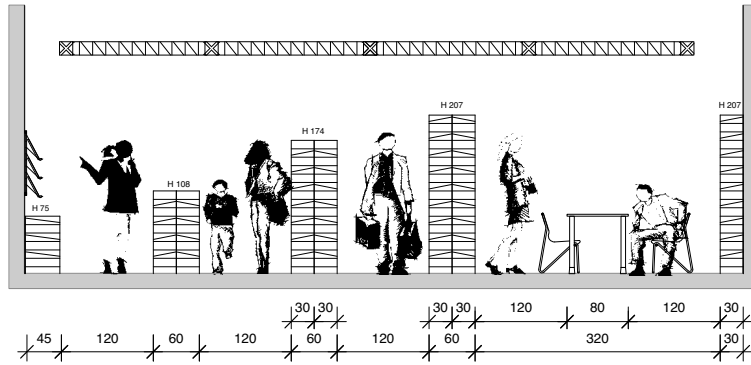
40 books, approx. for shelf L 96 cm

25 books, approx. for shelf L 56 cm

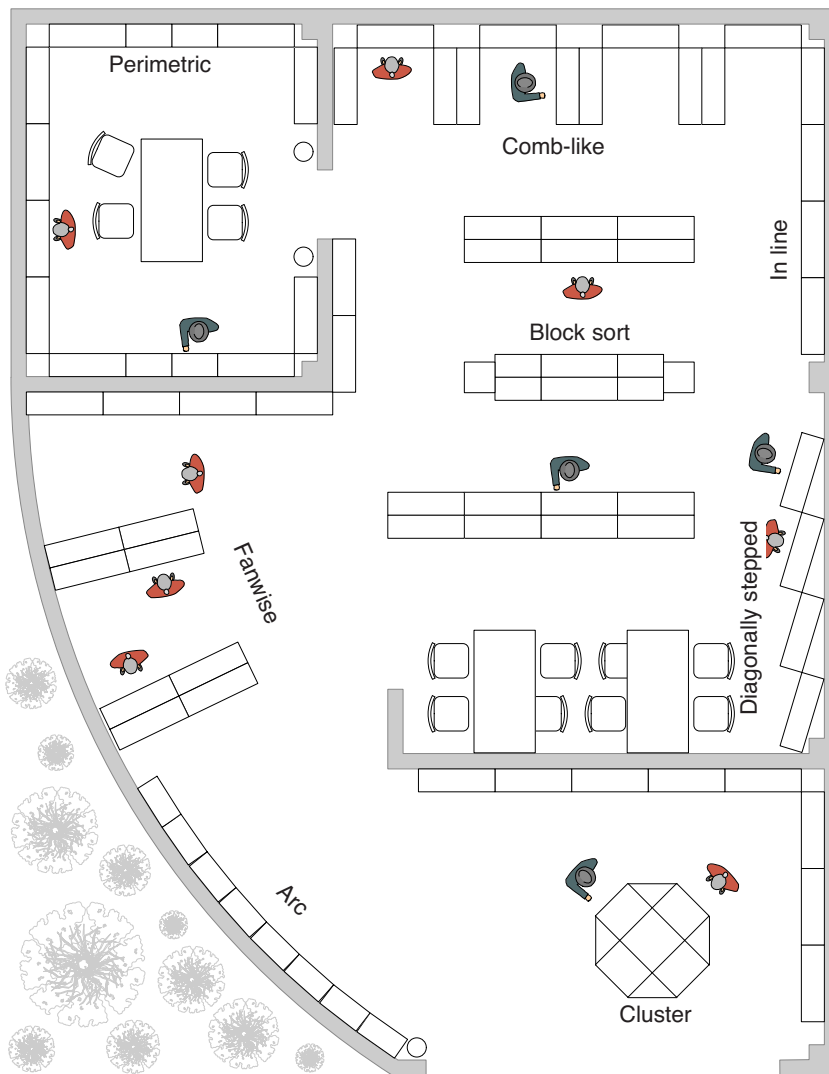
63 CD approx. for shelf code 2648

21 VHS approx. for shelf code. 2648

MONNALISA



Minimum distances and bookcases height



Layout examples



CAIMI BREVETTI S.p.A. - Via Brodolini, 25/27 - 20834 Nova Milanese - MI - Italy - tel. 0362 49101
 Ufficio Vendite Italia: tel. 0362 491001 - fax 0362 491060 - e-mail: vendite.italia@caimi.com
 Export Department: tel. (+39) 0362 491002 - fax (+39) 0362 491061 - e-mail: export.dept@caimi.com
 www.caimi.com

ST.050/3/ENG

Caimi Brevetti S.p.A. reserves, by its unappealable judgment, the right to modify without prior notice the building materials, the technical and aesthetic specifications, as well as the dimensions of the products in this technical sheet, where pictures are purely as an indication.